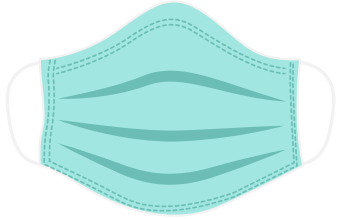


KEEPING OUR HEROES SAFE

Personal Protective Equipment

Universal masking



UNIVERSAL MASKING:

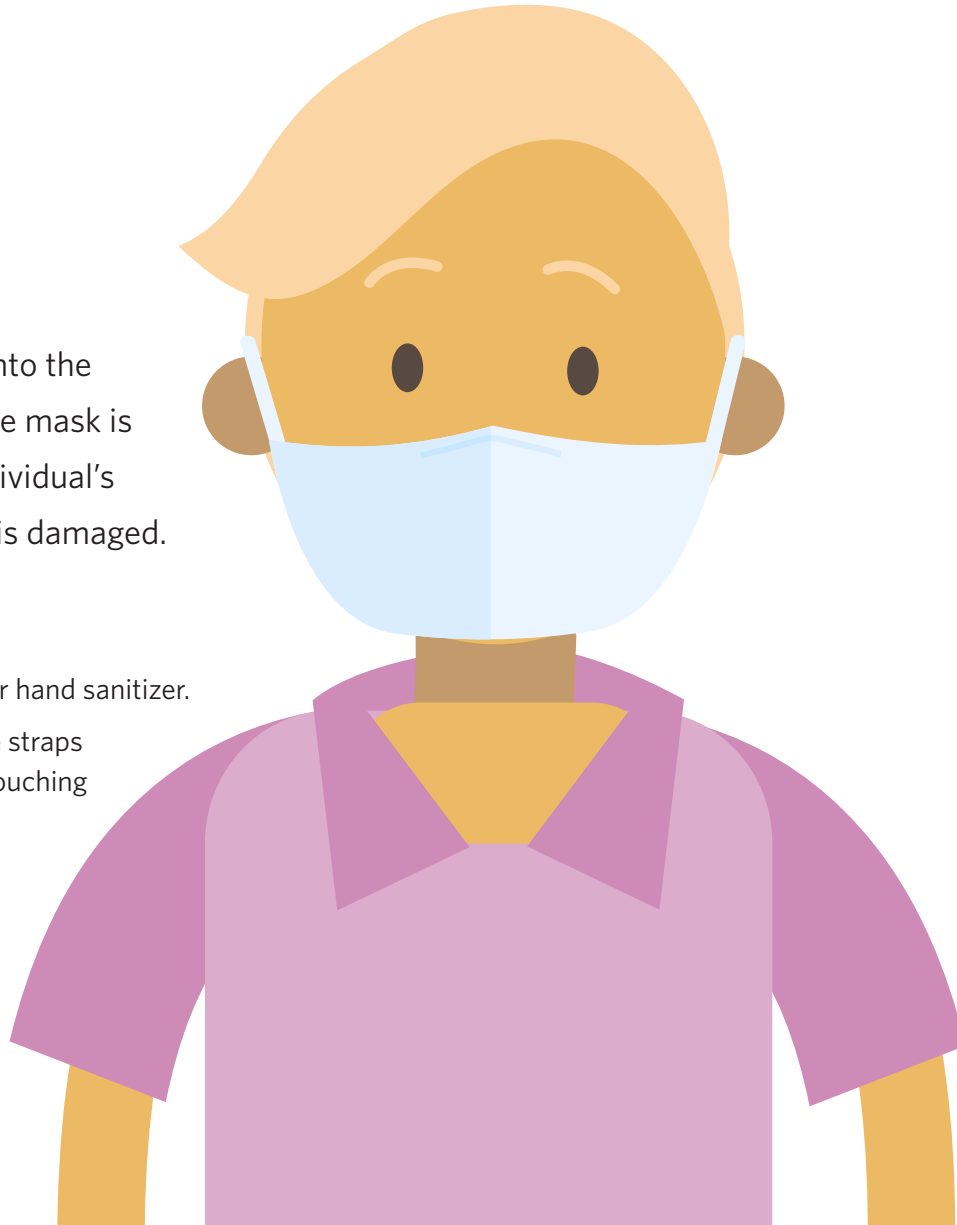
wearing a regular face mask upon entry into the building and taking it off upon leaving. The mask is to be worn during all times unless the individual's health status has changed or if the mask is damaged.

When putting on and taking off mask:

- Perform hand hygiene with soap and water or hand sanitizer.
- Regardless of mask, always hold mask by the straps or elastic band when applying mask. Avoid touching any other part of the mask.
- Ensure mask covers below eyes and under the chin.



If you are an associate, please scan the QR code for details.



Additional Prevention Measures



Wash your hands thoroughly and often.



Do not touch your face.



Practice **social distancing (6ft)**.



Cover your cough and sneezes and wash your hands after.



Clean and disinfect objects and surfaces that are frequently touched.



Stay home if you are sick.

If you have been out of the country and/or caring for COVID-19 infected individuals within the previous 14 days, contact Associate Occupational Health before returning to work.